



THROW YOUR OWN MUNNYWORLD PARTY!

A HOW-TO GUIDE

At Kidrobot, we've held tons of fun & exciting MUNNYWORLD Do-It-Yourself parties. So much fun that we thought you might like to have a DIY party, too! MUNNYWORLD Parties are fun whether you invite 2, 20 or 200 people!

The next page includes suggestions for setting up your party, tips for customization, recommendations and supply lists, templates and how to share your MUNNYWORLD figure when you are done.

Remember, in MUNNYWORLD, you can do anything you want!

Transform MUNNY, Trippy, Raffy, Foomi, Bub, and Rooz into works of art. Each one is a blank canvas, and all ready for scribbling, piercing, painting, posing, piling, dressing up and sculpting into forms straight from your imagination. Or you can keep them just as they are.

See how great you truly are! Do amazing things and create more than ever before! And, most importantly, have fun with MUNNYWORLD!





SETTING UP YOUR MUNNYWORLD PARTY

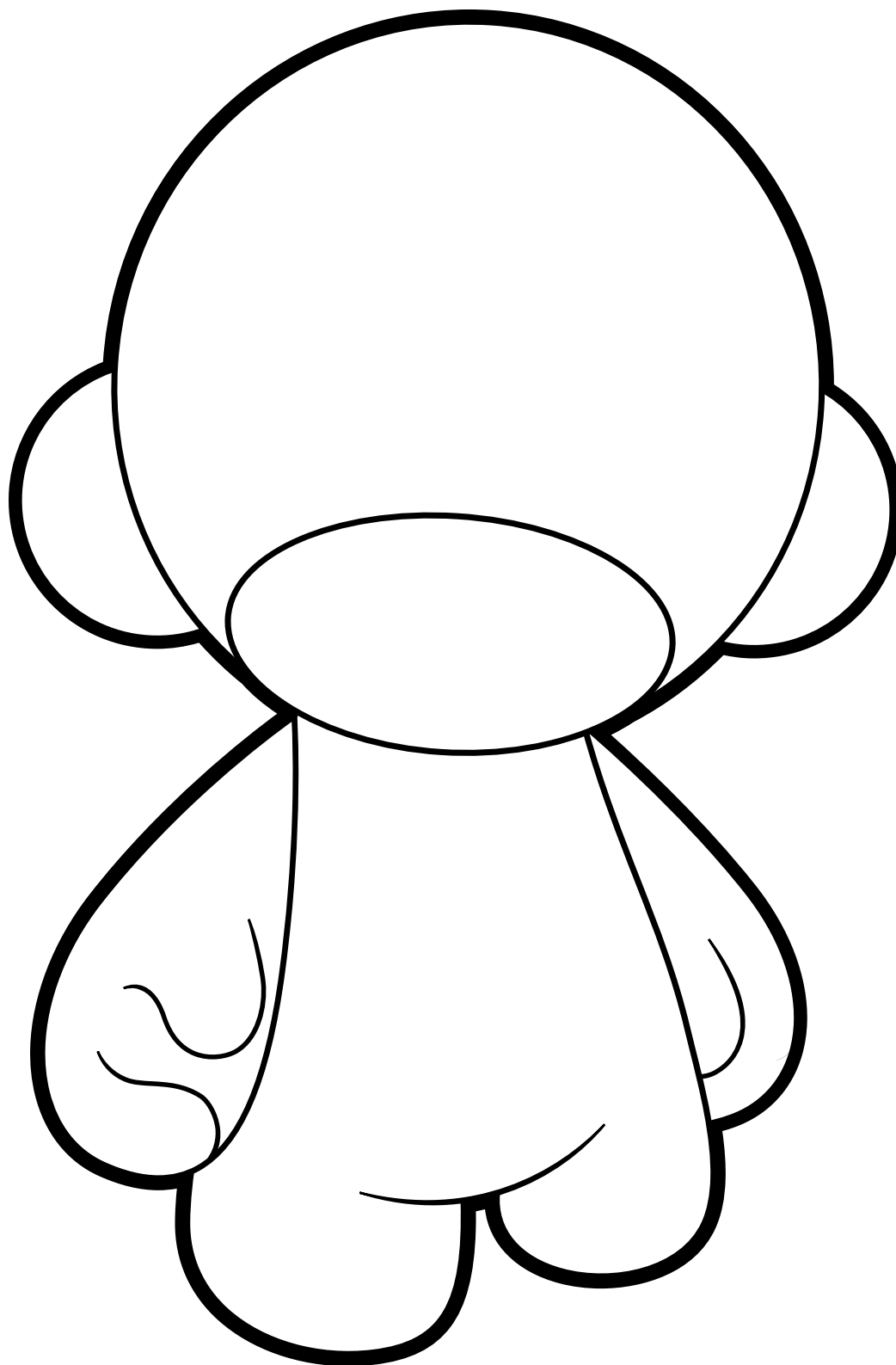
Check out this list of stuff you can use to decorate MUNNYWORLD and to prep your party area. Ask your friends to bring stuff for MUNNYWORLD too!

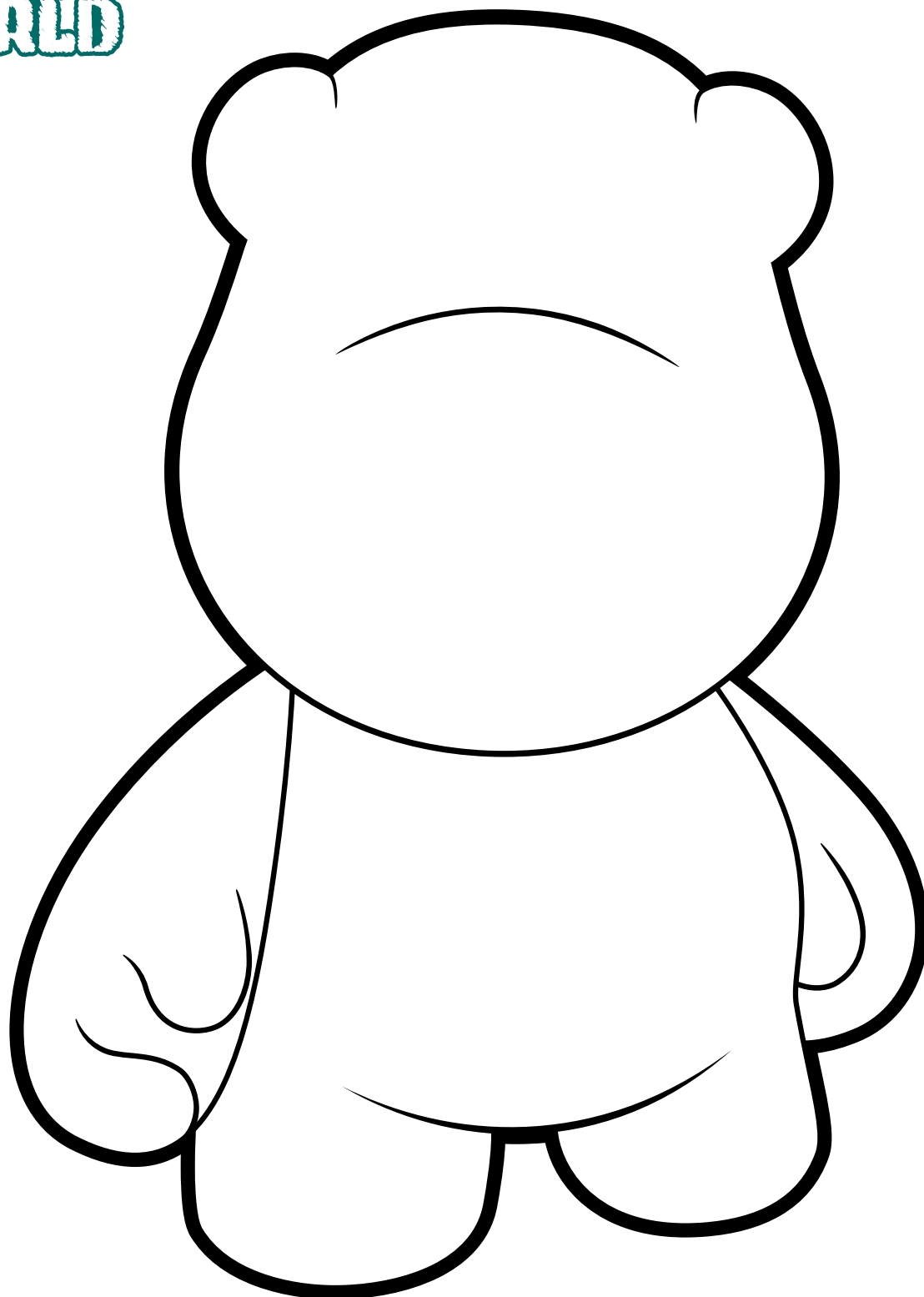
- | | | |
|---|---|--|
| <input type="checkbox"/> Acrylic paint
(not water based) | <input type="checkbox"/> Stickers | <input type="checkbox"/> Paper towels |
| <input type="checkbox"/> Crayons
(Prang work best) | <input type="checkbox"/> Origami paper | <input type="checkbox"/> Paper or cloth
to cover the tables |
| <input type="checkbox"/> Sharpies/permanent markers | <input type="checkbox"/> Yarn | <input type="checkbox"/> Cheap tools |
| <input type="checkbox"/> Silver/Gold markers | <input type="checkbox"/> Feathers | <input type="checkbox"/> Newspaper |
| <input type="checkbox"/> Colored pencils | <input type="checkbox"/> Construction paper | <input type="checkbox"/> Cookies & milk |
| <input type="checkbox"/> Fabric scraps | <input type="checkbox"/> Paper Maché | <input type="checkbox"/> Puff paint |
| <input type="checkbox"/> Googly eyes | <input type="checkbox"/> Paintbrushes | <input type="checkbox"/> Broken toys |
| <input type="checkbox"/> Buttons | <input type="checkbox"/> Felt | <input type="checkbox"/> Old wigs |
| <input type="checkbox"/> Pipe Cleaners | <input type="checkbox"/> Wood bits | <input type="checkbox"/> Plastic flowers |
| <input type="checkbox"/> Glitter | <input type="checkbox"/> Clothespins | <input type="checkbox"/> Sculpy or clay |
| <input type="checkbox"/> Scissors | <input type="checkbox"/> Toothpicks | <input type="checkbox"/> Wallpaper pieces |
| <input type="checkbox"/> Elmer's glue | <input type="checkbox"/> Hair dryer | |
| <input type="checkbox"/> Beads | <input type="checkbox"/> Glue guns | ADULTS ONLY! |
| <input type="checkbox"/> Sequins | <input type="checkbox"/> Paint Pens
(various colors) | <input type="checkbox"/> Screwdrivers |
| <input type="checkbox"/> Tape | <input type="checkbox"/> Needle & thread | <input type="checkbox"/> Hand drills |
| <input type="checkbox"/> Pom-poms | <input type="checkbox"/> Plastic cups
for mixing paint | <input type="checkbox"/> Hammers |
| | | <input type="checkbox"/> Nails |

BEFORE YOUR FRIENDS ARRIVE

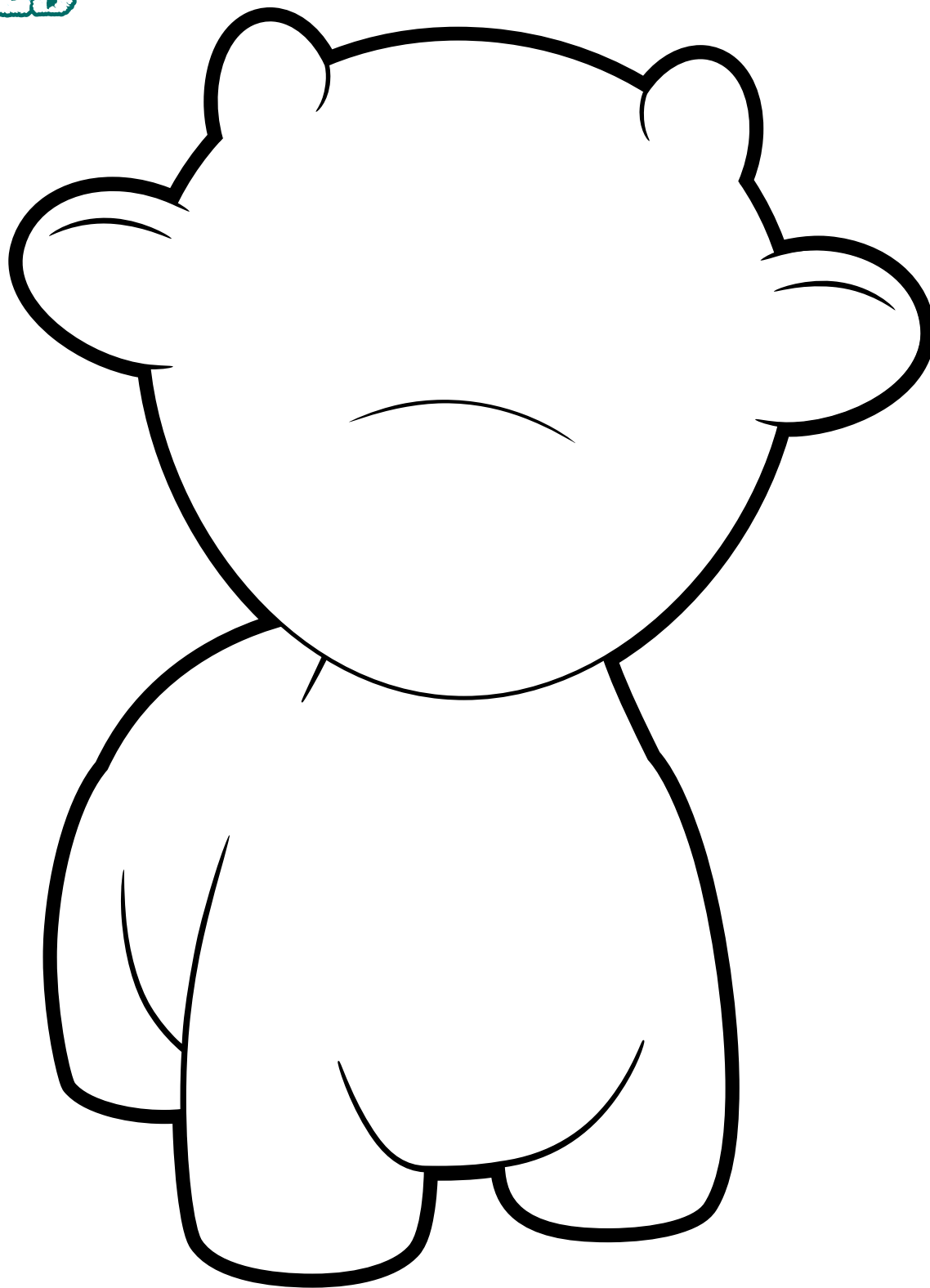
Designate an art supply table, a decorating table (with enough chairs for everyone) and a drying and display table. Be sure to cover these tables with newspaper so you and your friends can get as messy as you want! Print copies of our MUNNYWORLD customizing tips to give out to everyone.

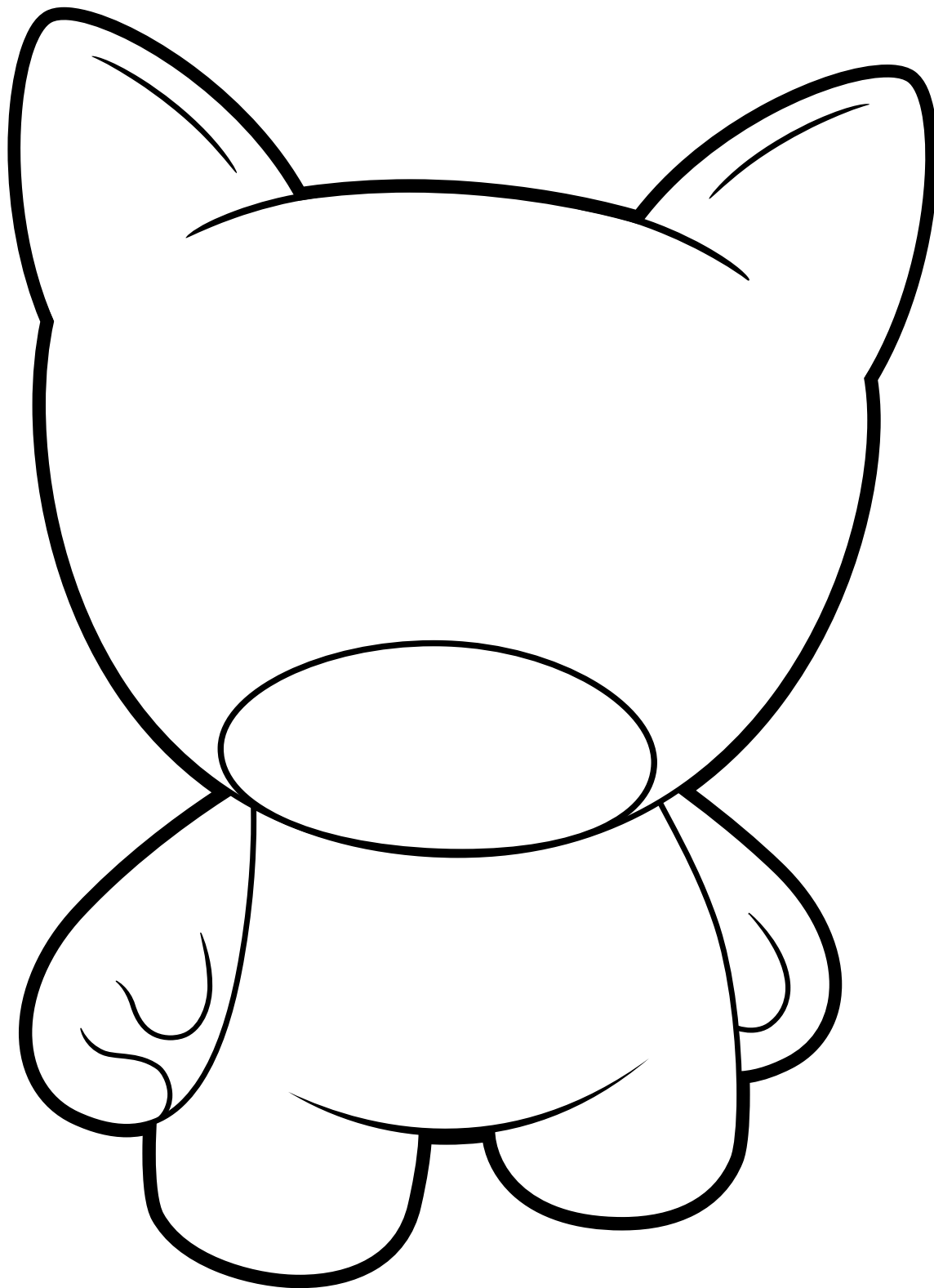
If you want to plan out your MUNNYWORLD figure before you begin, check out the following templates. They provide a good space for you to get those creative juices flowing. Print these out and give them to your party guests. While planning can be helpful, it's okay to jump right in to MUNNYWORLD if you feel like it.



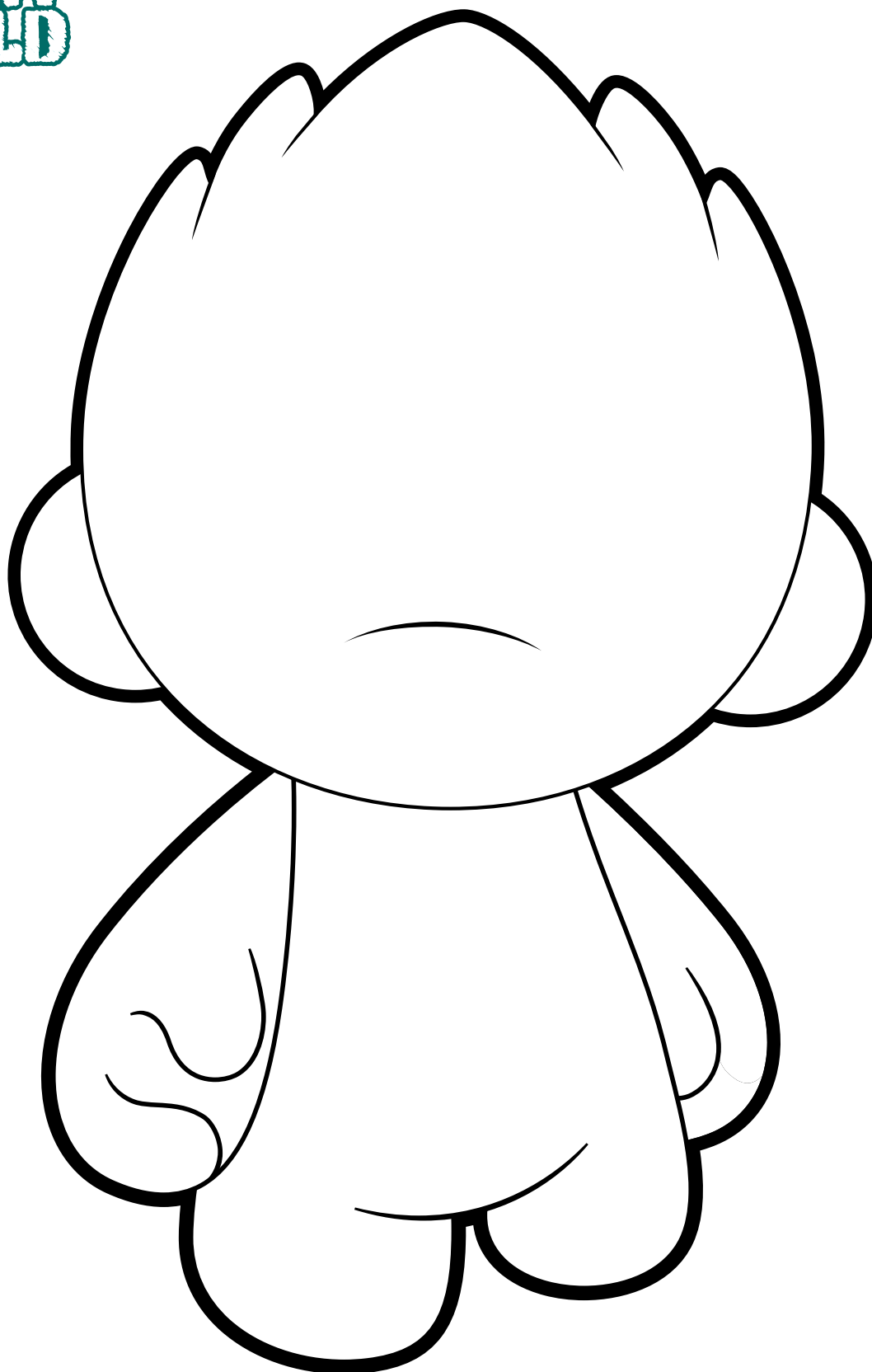


MUNNY
WORLD™

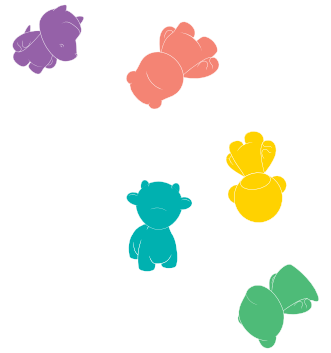












Tips to Customize Your WORLD

The following are the methods and recommendations of our friend, artist Sara Antoinette Martin. While these are tried-and-true customization tips, Kidrobot is not responsible for the outcome of any custom art endeavors.

Get Ready: Pep Talk

- First things first, take your MUNNYWORLD toy apart. Have no worries, the head and arms can be easily removed and replaced. Using a hair dryer to soften the vinyl may help, just be careful to not let one spot get too hot or else it may warp.
- Next, wash your MUNNYWORLD figure with bubbly soap to remove any solvents and grease from the factory. Keep in mind that your hands are oily, too, so wash them often or wear latex gloves.
- You may also want to test a technique before you apply it to your MUNNYWORLD toy. A good place to do this is on the bottom of your figure's foot or an unused accessory. Some accessories are not made of vinyl, and you can usually feel the difference. If this is the case, the technique you are testing may not work the same when applied to your MUNNYWORLD figure.
- Warning: MUNNYWORLD is for people of all ages, but some techniques, like the ones below, may involve dangerous tools or chemicals. If you are 15 and under, stick to markers and crayons, or team up with a grown up to create your MUNNYWORLD masterpieces.

Priming: A Good Foundation is Everything

- Priming allows you to do even more with your MUNNYWORLD figures! It helps the paint stick better and gives you the best possible finish.
- Krylon Sandable Primer is one of our favorites, but you can use any spray primer from a hardware or art supply store.
- Take the head and arms off and stick a pen or kebab skewer in the holes to get full coverage in one shot.
- Tape off the joints with artist tape so the parts will easily fit back together. When applying primer, remember to work in a well-ventilated area and wear a mask or respirator to protect your lungs.



Paint: Your Perfect Picture

- Acrylic paints go on smooth, give full coverage and do not require a primer. Our favorite of the lot is Golden Liquid Acrylics.
- When selecting a brush, opt for a synthetic sable one. This type of brush gives the smoothest application.
- Before you start your paint job, remove and tape up the joints so your figure will easily fit back together once you are done.
- Spray paint calls for primer. If you skip this step, your MUNNYWORLD toy will be sticky forever.

Markers: Make Your Mark

Regular Sharpies work best on vinyl, especially if you don't want to prime your figure. Water-based markers and paint pens are other options if you want to avoid priming. Do NOT use enamel markers. The paint will never dry and may even damage your figure.

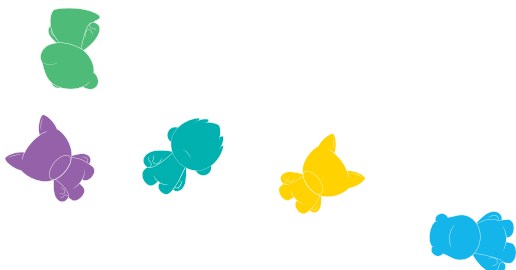
Gluing: Stick To It

- If you don't have a glue gun, try plastic glue, available at model-making, hobby, or art supply stores.
- For heavy add-ons, such as sculpt parts and metal, two-part epoxy glue works best. Avoid regular white craft glue, as it does not adhere to vinyl.

Sculpting: Mold Your Reality

Magic Sculpt is a two-part epoxy clay that adheres to anything and dries overnight so you can sand and carve it. A few Magic Sculpt tips:

- Wet clay to smooth its surface.
- Sprinkle clay with talcum powder to prevent sticking.
- Wash your hands often.





Super Sculpey

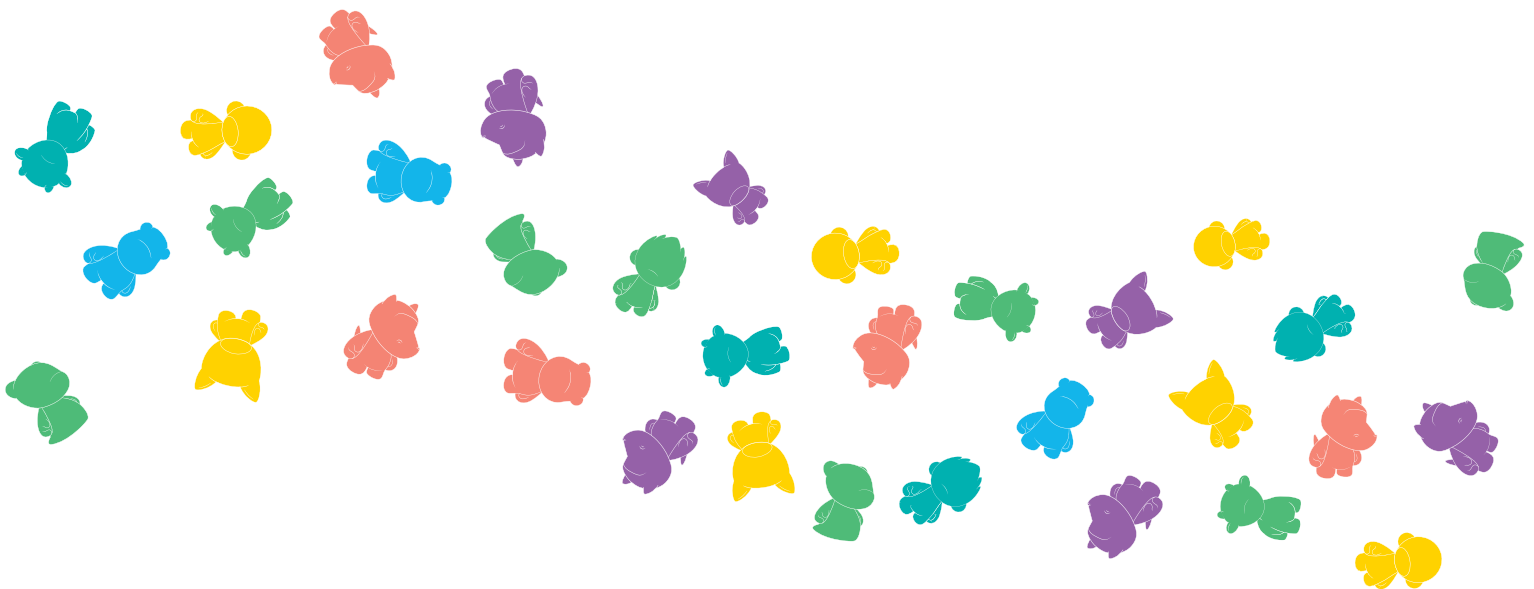
Super Sculpey, polymer clay, is another option. You need to first bake it, however, and then bind it to your vinyl with epoxy glue. A few Super Sculpey tips:

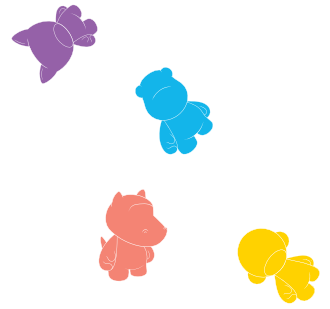
- Bulk out your sculpt with tin foil.
- Cover the area that you want to build on with talcum powder or tin foil.
- When you are finished, stick your figure in the freezer for 30 minutes. This will make the clay rigid and easy to lift.
- Don't make your Super Sculpey thicker than a quarter inch or it won't cure all the way.
- Scratch the surface you will be gluing with sandpaper or a file so the glue has texture to bind to.
- Your hands are your best tools, but actual tools are helpful too. Here are some useful household items: small spoons, string or dental floss, paper clips, ice pick, wooden skewers, tweezers, sponge, pencils, manicure tools, rolling pins and X-Acto knives. Remember, polymer clay is toxic, so wash your hands, protect your work surface, and don't use any household tools that you use for eating.

Cutting: Shape the Future

Warm up your vinyl with a hair dryer to make it soft, then cautiously cut out your design with an X-Acto knife.

Be careful! Soft vinyl cuts like butter





Preservation: Keep Shining

- Applying a gloss finish to your masterpiece will preserve your custom MUNNYWORLD figure forever and prevent its paint from chipping. Depending on the brand and number of coats, it may also make your figure shiny.
- Krylon's Crystal Clear spray works well but you will definitely need to prime your figure or else it will stay sticky. Shake the can frequently while spraying. If you don't like the shiny look, matte finishes are also available.
- One coat will protect the paint job, but two or three coats should give you a nice shine. Be sure to read the directions on the can before application. You can brush on your finish with Polycrylic, a water-based polyurethane, available at any hardware store. If you take this route, make sure you apply it with a soft brush.
- Tape up the joints for finishing so you can easily remove and pop in pieces when it's dry. Allow a reasonable amount of time (about 2-4 days) for the clear coat to dry completely.
- Once again, please remember to apply finishes in a well-ventilated area and wear a mask for protection.

Shipping: It Absolutely, Positively Has To Get There

Are you planning to send your custom vinyl toy somewhere? Then, take heed:

- It's best to carefully cover your custom vinyl in a plastic bag, such as a garbage bag. Please note, if the clear coat is not completely dry, the plastic will stick to the paint and peel off when unwrapping.
- Then, pack in Styrofoam. Include desiccant packets to absorb moisture while shipping.
- Last, make sure the box is securely reinforced for shipping!

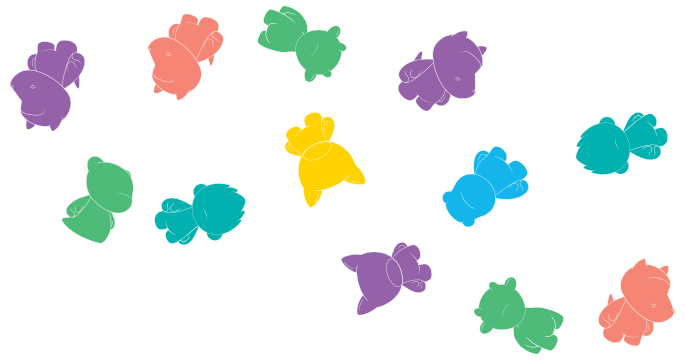
Mistakes: You're Only Human...

Don't worry, even the best-laid plans can go awry. While these guidelines are here to help you create the very best custom vinyl figure you can, things do not always go as planned. That's okay-only through mistakes can there be discovery or progress. You may even create an accidental masterpiece.

If you feel strongly that a do-over is necessary, however, you can try the following:

- You can remove spray paint, primer, clear coat and most markers with acetone or nail polish remover.
- Acrylic paint can be easily scraped off.

In MUNNYWORLD, you can do whatever you want, and we encourage you to experiment with your favorite artistic disciplines and techniques. Good luck!



Share your MUNNYWORLD Creation!

When you are finished with your MUNNYWORLD figure, check out our Facebook page to find out how you can share your MUNNYWORLD with the rest of planet Earth. Post a photo of your figure and see what everyone else is doing. You could even win a prize if you post your photo before 5/31/2012!

 /kidrobot

**Happy creating! And remember,
the most important thing is to have
fun in MUNNYWORLD!**

